

WITHIN THESE GATES

44 states & **40+** countries

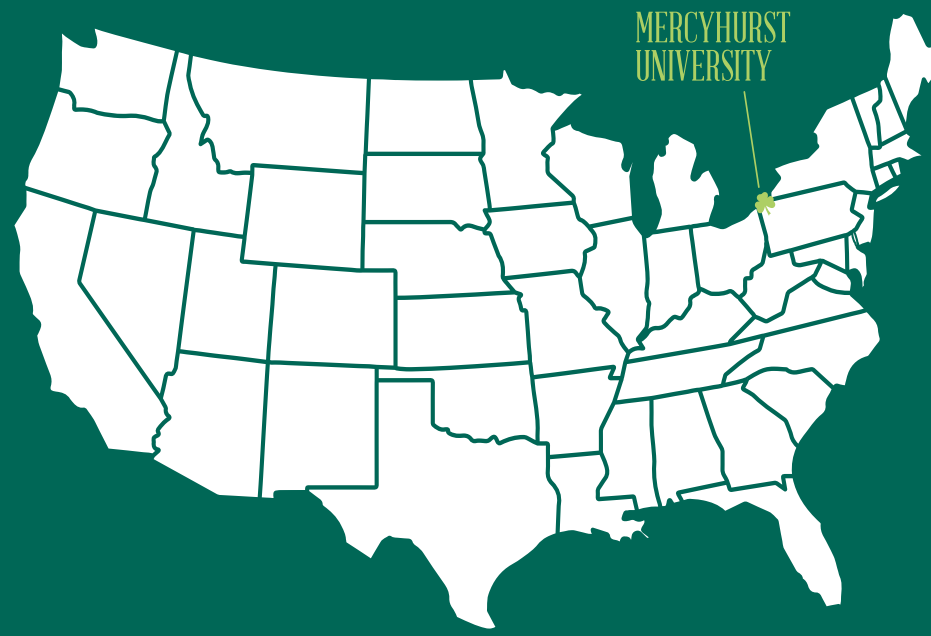
REPRESENTED

26 varsity athletic teams & **500** graduate students

14:1 student-to-faculty ratio & **80+** academic majors

80+ student clubs and organizations & **24/7** campus police

2,600 undergraduate students



Erie, Pennsylvania, is located:

- 154 km from Buffalo, New York
- 163 km from Cleveland, Ohio
- 190 km from Niagara Falls
- 205 km from Pittsburgh, Pennsylvania
- 312 km from Toronto, Ontario, Canada
- 592 km from Washington, D.C.
- 695 km from New York City
- 715 km from Chicago, Illinois

 **MERCYHURST**
UNIVERSITY

Courtney Olevnik '08 '13M
Director of International Student Services
Principal Designated School Official (PDSO)

colevnik@mercyhurst.edu
+1 814-824-3056

CARPE DIEM



CAMPUS TOUR



EMAIL US



APPLY TODAY

INTERNATIONAL UNDERGRADUATE ADMISSIONS



MERCYHURST
UNIVERSITY

mercyhurst.edu/international

501 East 38th Street • Erie, PA 16546

BACHELOR'S PROGRAMS

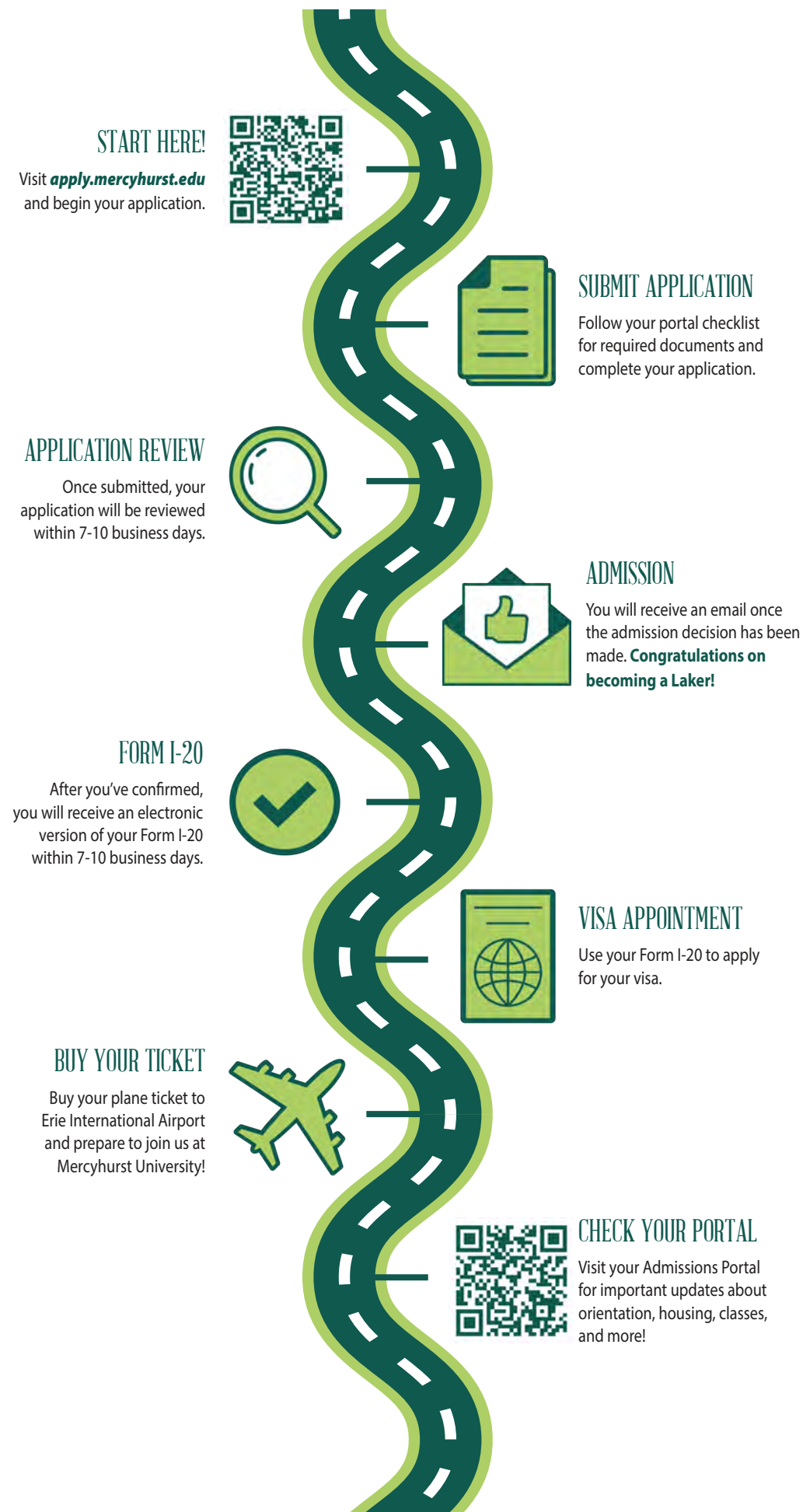
- | | |
|---------------------------------------|--|
| Accounting | Human Resource Management |
| Anthropology/Archaeology | Integrated Media and Strategic Communication |
| Applied Forensic Sciences | Intelligence Studies |
| Applied Sociology | Interior Architecture and Design |
| Art Education | International Business |
| Art Therapy | Management |
| Biochemistry | Marketing |
| Biology | Music |
| Business and Competitive Intelligence | Music Composition |
| Business Economics | Music Education |
| Chemistry | Music Performance |
| Criminal Justice | Music Therapy |
| Cyber Security | Nursing |
| Dance | Political Science |
| Data Science | Pre-Professional Health Programs (medicine, dentistry, osteopathy, pharmacy, etc.) |
| Early Childhood Education | Psychology |
| Early Childhood/Special Education | Public Health |
| English | Russian Studies |
| Environmental Science | Spanish |
| Exercise Science | Spanish Education |
| Fashion Merchandising | Sport Business Management |
| Finance | Sport and Event Management |
| Geology | Sports Medicine |
| Graphic Design | Studio Art |
| History | |
| Hospitality Management | |

MASTER'S PROGRAMS

- | | |
|--|---|
| Applied Intelligence (online or on campus) | Organizational Leadership (online)* |
| Athletic Training (on campus) | Physician Assistant Studies (on campus) |
| Criminal Justice Administration (online)* | Secondary Education (online)* |
| Cyber Security (online or on campus)* | Special Education and Applied Disability Studies (on campus)* |
| Data Science (on campus)* | Teaching Excellence (online) |
| Forensic and Biological Anthropology (on campus) | |
| Integrative Nursing Leadership (online) | |

* These master's programs are available as 4+1 programs. Undergraduate students can get a head start by taking graduate-level courses during their junior and senior years, before staying for one additional year to finish their master's.

ROAD MAP TO ADMISSION



APPLY TODAY!

ADMISSIONS REQUIREMENTS

- Completed Online Application at (apply.mercyhurst.edu)
- Bank Affidavit
- Proof of English Language Proficiency
- Certification of Finances
- Official Transcripts in English
- Passport Photo Page

ENGLISH PROFICIENCY TESTS ACCEPTED

We accept these tests and scores:

- Duolingo - 100+
- IELTS - 6.5+
- PTE - 85+
- TOEFL - 79+
- TOEFL Essentials - 8.5+

INTERNATIONAL STUDENT OFFICE

The International Student Office (ISO) is a one-stop shop that advises on:

- The Application Process
- Curricular Practical Training (CPT)
- Immigration Documents
- Optional Practical Training (OPT)
- On-Campus Employment
- STEM OPT Extension
- Social Security Number
- ...and much more!

Additionally, the ISO organizes cultural immersion events and hosts workshops that help international students navigate their lives here in the United States.

